



±335,000 SF Industrial Space for Lease

Ashland Road | Rockville, VA



Ben Bruni, SIOR
804-793-0046
bbruni@commonwealthcommercial.com

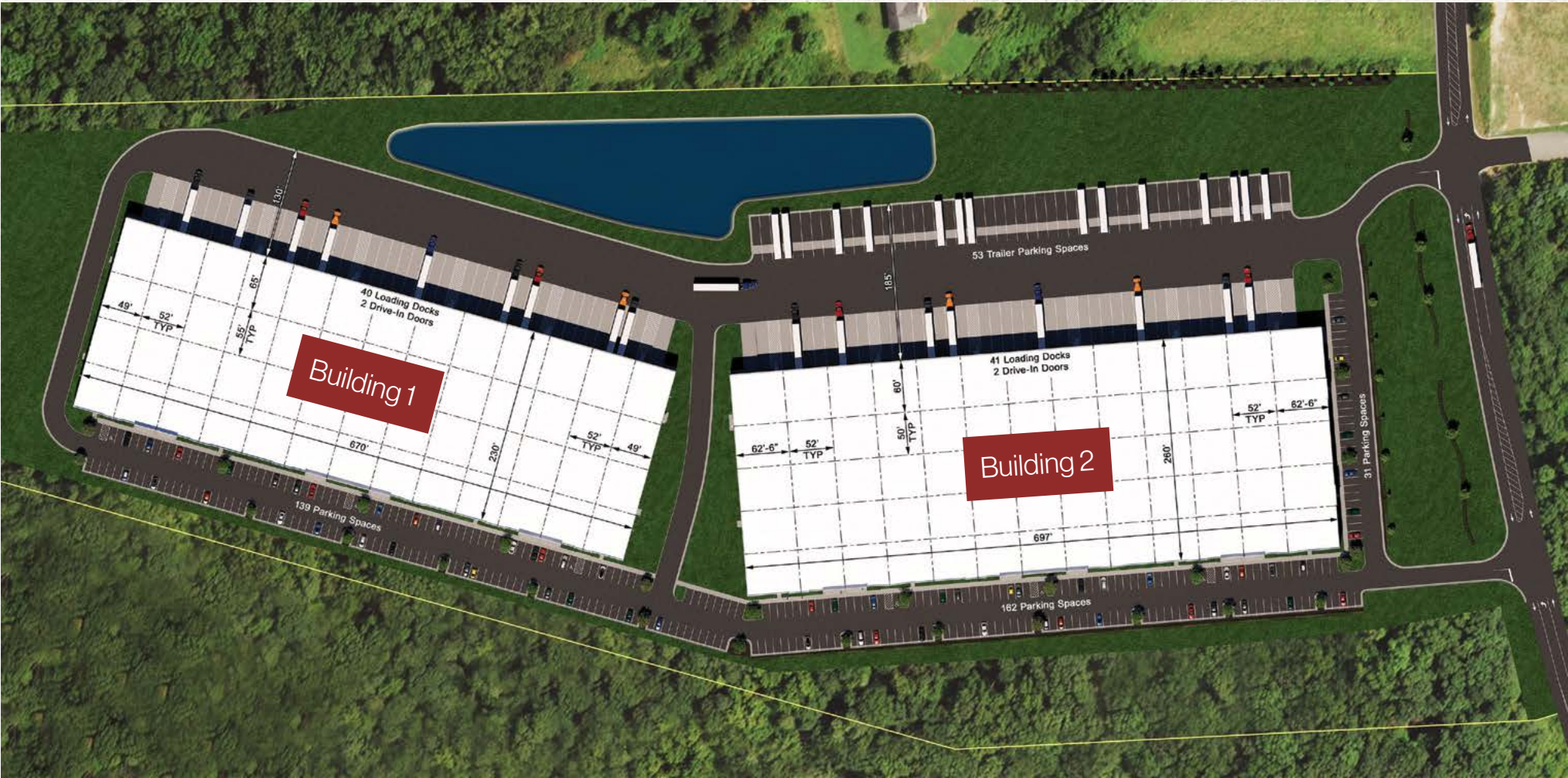
Colton Konvicka
804-324-7209
ckonvicka@commonwealthcommercial.com



Site Plan

Building 1 | ±154,100 SF

Building 2 | ±181,220 SF



Building 1



Single or Multi-tenant Flexibility

- › 23,230 SF - 154,100 SF
- › Building dimensions: 230' x 670'
- › 2800 amps of power
- › Six (6) 7' x 8' 35k lbs mechanical pit levelers
- › 6" concrete slab at 4000 PSI
- › 65' deep loading bay
- › LED Lighting 25fc at 36" aff



Up to ±154,100 SF



2 Drive-In Doors



55' x 52' Column Spacing



32' Clear Height



139 Car Parks



ESFR Fire Suppression



40 Dock High Doors



130' Truck Court Depth

Building 2



Single or Multi-tenant Flexibility

- › 27,040 SF - 181,220 SF
- › Building dimensions: 260' x 697'
- › 2800 amps of power
- › Six (6) 7' x 8' 35k lbs mechanical pit levelers
- › 6" concrete slab at 4000 PSI
- › 60' deep loading bay
- › LED Lighting 25fc at 36" aff



Up to ±181,220 SF



2 Drive-In Doors



185' Truck Court Length



32' Clear Height



162 Car Parks



55' x 52' Column Spacing



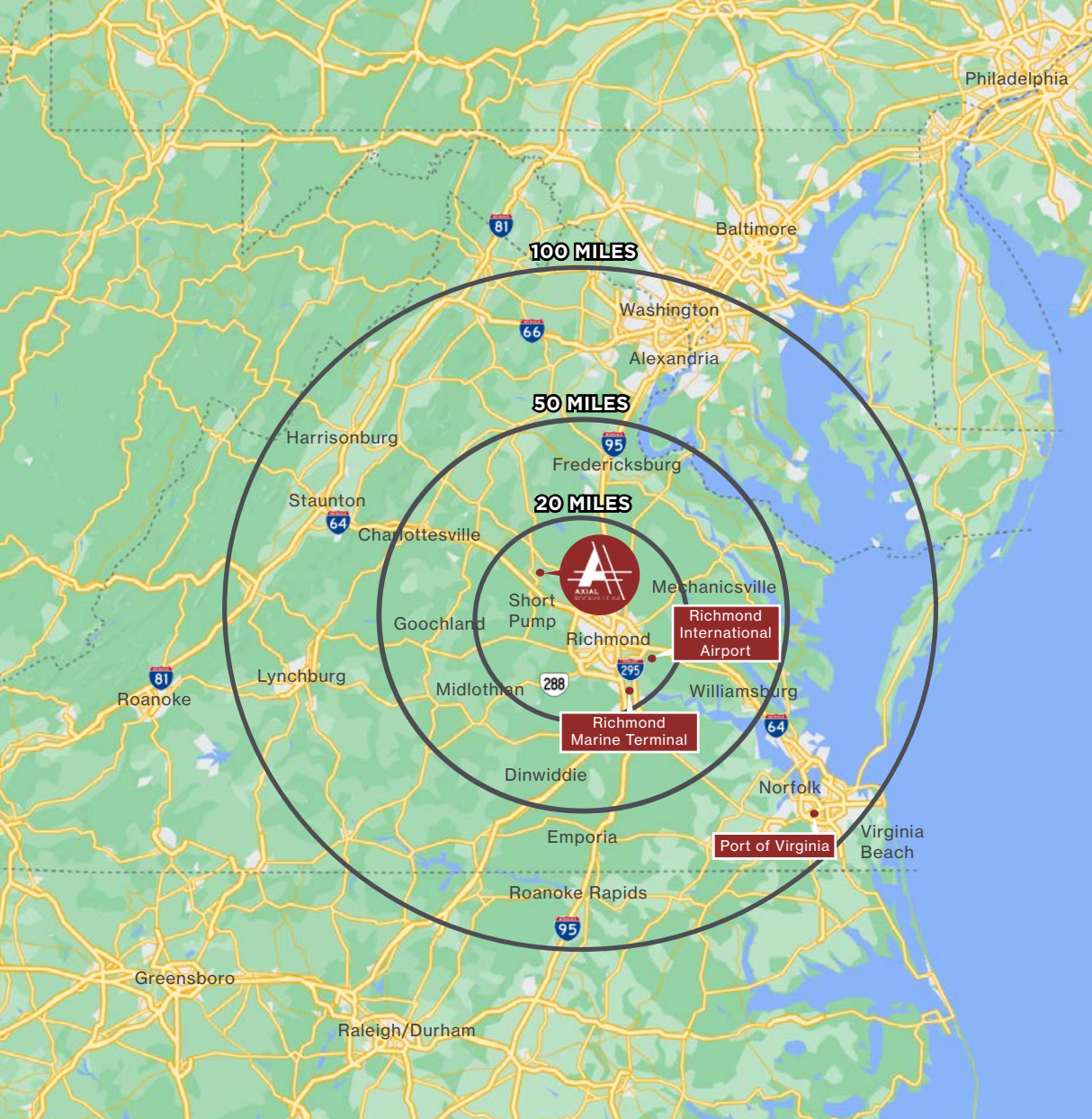
41 Dock High Doors



53 Trailer Parks



ESFR Fire Suppression

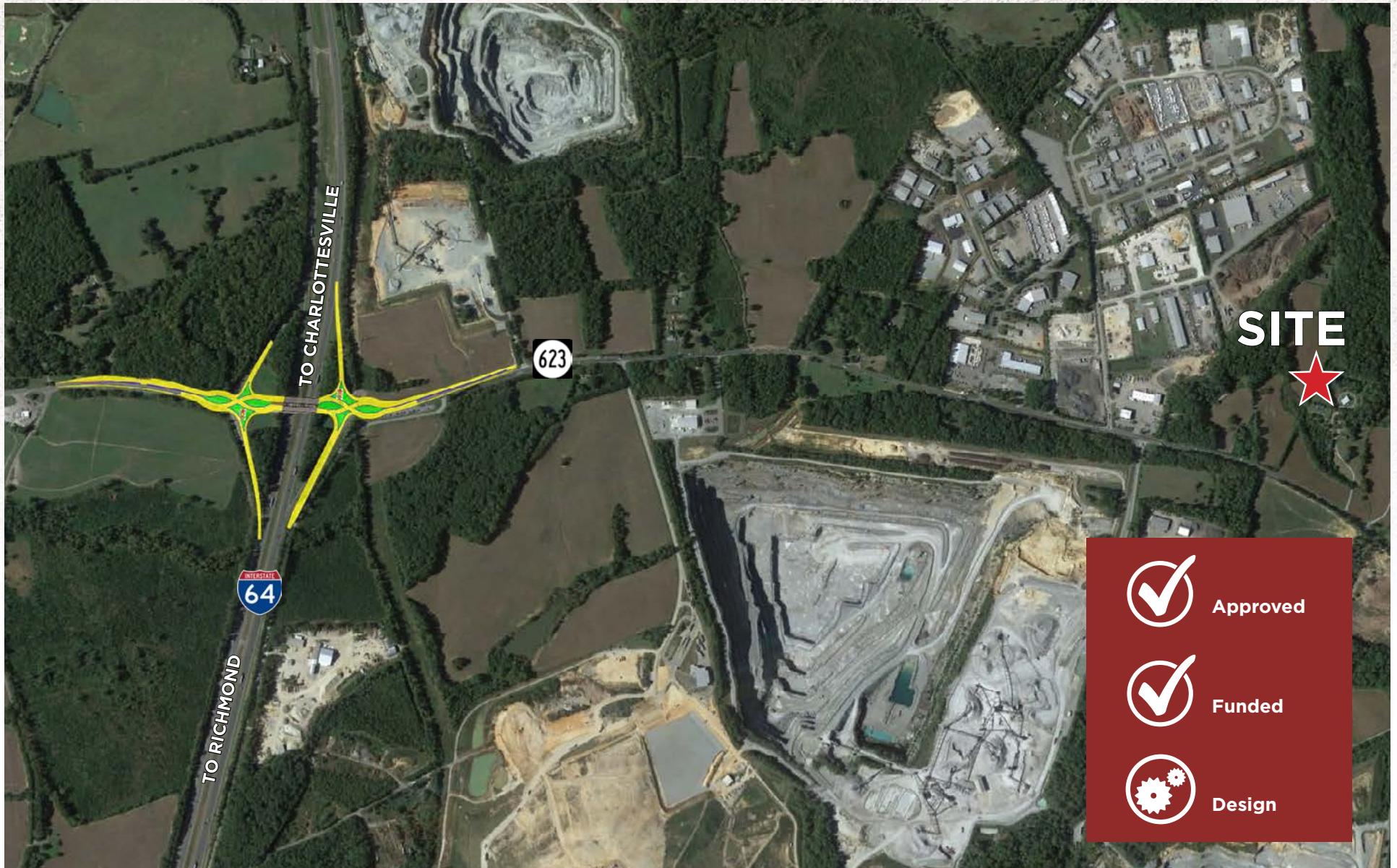


Drive Times

	MINUTES	MILES
Interstate 64	2 minutes	1.7 miles
Highway 288	2 minutes	2 miles
Interstate 295	6 minutes	3.2 miles
Short Pump	9 minutes	5 miles
Interstate 95	15 minutes	15 miles
Richmond International Airport	31 minutes	27.1 miles
Richmond Marine Terminal	37 minutes	25 miles
Charlottesville	52 minutes	54 miles
Port of Virginia	1 hr 50 minutes	113 miles



Divergent Diamond Interchange: I-64/Rt 623



Approved



Funded



Design



FOR MORE INFORMATION, PLEASE CONTACT:

Ben Bruni, SIOR

804-793-0046

bbruni@commonwealthcommercial.com

Colton Konvicka

804-324-7209

ckonvicka@commonwealthcommercial.com

AXIALINDUSTRIAL.COM

Commonwealth Commercial Partners, LLC represents the Landlord of this property. Information contained herein is deemed reliable but is not guaranteed.