 NOW LEASING



AXIAL Crosspoint will consist of three rear-load buildings totaling 552,300 square feet with ample employee parking and trailer parking. The three buildings will measure 280,800, 72,000 and 199,500 square feet and provide the flexibility to accommodate multiple tenants. These features, along with modern clear heights, will satisfy both local and regional distribution tenants in addition to light manufacturing and assembly users.



AXIAL CROSSPOINT

**101-301**

PIEDMONT GROVE PARK  
GREENVILLE, SC 29611

### Contact

Marcus Cornelius  
864.242.6169  
marcus.corneliusiv@cbre.com

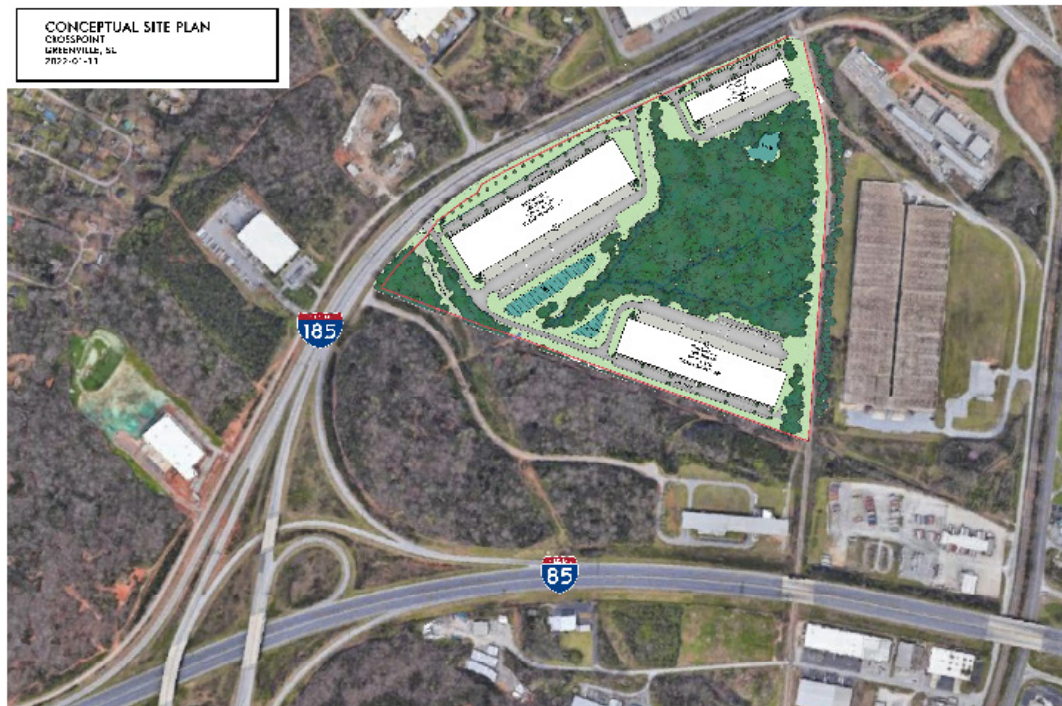
Nick Hollstegge  
864.242.6169  
nicholas.hollstegge@cbre.com

**CBRE**

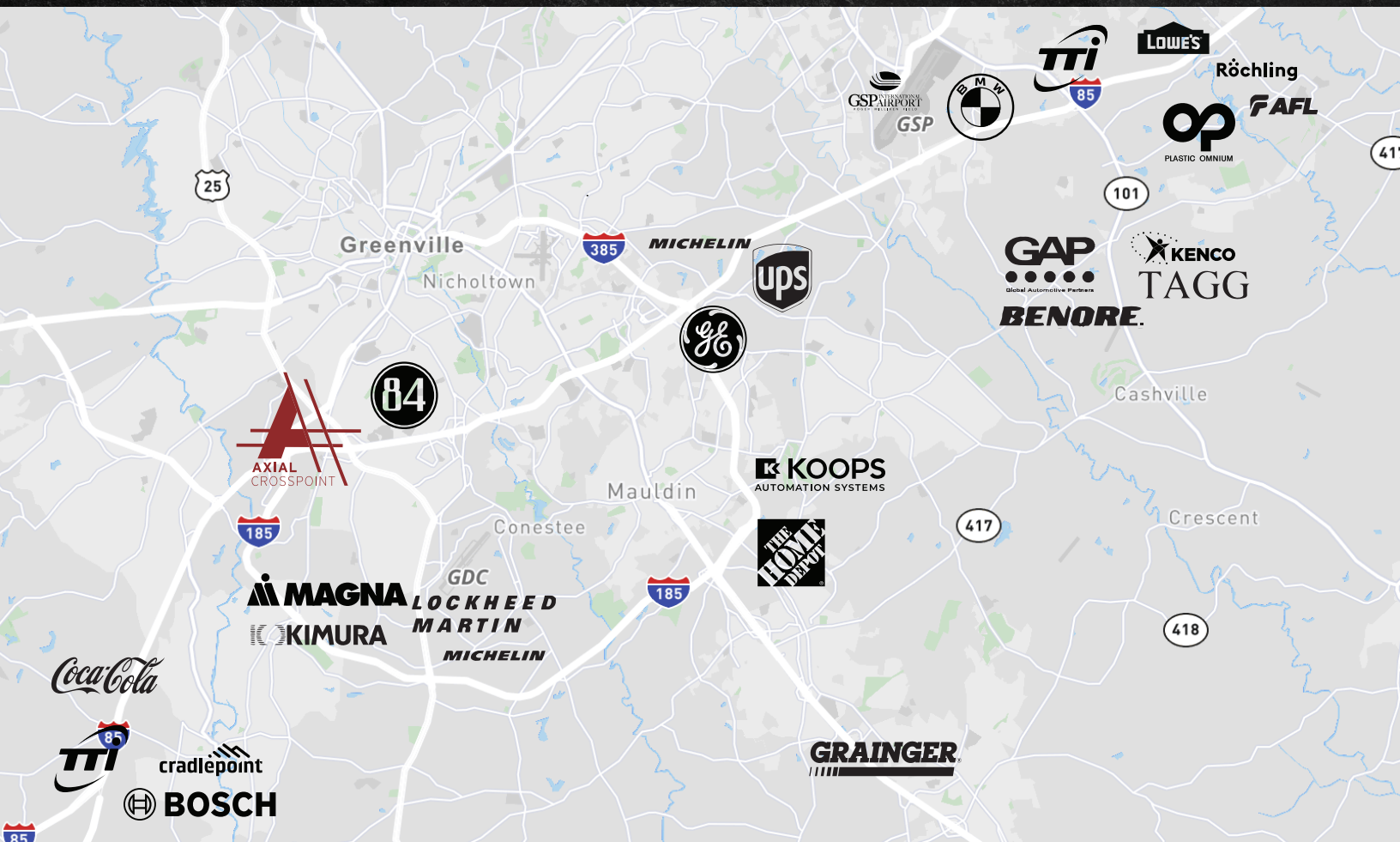




● SITE PLAN







Midpoint of the East Coast between Miami and New York

Located along the I-85 corridor between Charlotte and Atlanta

More than 520 international companies with a presence in Greenville-Spartanburg

Market has averaged roughly 5 million square feet of positive net absorption during the past five years

Industrial market measures approximately 201 million square feet

Excellent last mile location only 4.9 miles from Downtown Greenville

## Space to move

Totaling 552,300 square feet, Axial Crosspoint offers convenient, immediate access to both I-85 and I-185. Just a 10-minute drive to Greenville's central business district, seamless access for quick product movement, plus thoughtful details creates a modern design for modern logistical needs.



## SITE PLAN

### BUILDING 1

Building Size: 280,800 SF  
 Dimensions: 260' x 1,080'  
 Clear Height: 36'  
 Dock Doors: 60  
 Drive-In Doors: 2 (4 Knock-outs)  
 Column Spacing: 54' x 50' (60' speed bay)  
 Slab Thickness: 7"  
 Auto Parking: 216 Spaces  
 Trailer Parking: 66 Spaces  
 Concrete tilt wall  
 Rear-load configuration  
 Single-or multi-tenant design flexibility

### BUILDING 2

Building Size: 72,000 SF  
 Dimensions: 120' x 600'  
 Clear Height: 32'  
 Dock Doors: 31  
 Drive-In Doors: 2  
 Slab Thickness: 6"  
 Auto Parking: 104 Spaces  
 Concrete tilt wall  
 Rear-load configuration  
 Single-or multi-tenant design flexibility

### BUILDING 3

Building Size: 199,500 SF  
 Dimensions: 210' x 950'  
 Clear Height: 36'  
 Dock Doors: 51  
 Drive-In Doors: 2  
 Column Spacing: 52' x 50' (60' speed bay)  
 Slab Thickness: 7"  
 Auto Parking: 196 Spaces  
 Trailer Parking: 66 Spaces  
 Concrete tilt wall  
 Rear-load configuration  
 Single-or multi-tenant design flexibility



© 2022 CBRE, Inc. All rights reserved. This information has been obtained from sources believed reliable, but has not been verified for accuracy or completeness. You should conduct a careful, independent investigation of the property and verify all information. Any reliance on this information is solely at your own risk. CBRE and the CBRE logo are service marks of CBRE, Inc. All other marks displayed on this document are the property of their respective owners, and the use of such logos does not imply any affiliation with or endorsement of CBRE. Photos herein are the property of their respective owners. Use of these images without the express written consent of the owner is prohibited.