



675 & 685 Pitts School
Road NW, Concord, NC

Bryan Crutcher
704.331.1215
bryan.crutcher@cbre.com

Anne Johnson
704.331.1225
anne.johnson@cbre.com



Building #1 - 685 Pitts School Rd NW

Single or Multi-Tenant Design Flexibility

- + I-2 Zoning
- + Excellent labor pool
- + Close proximity to Concord Padgett Regional Airport
- + Ample employee amenities in immediate area
- + I-85 Signage Opportunity for Tenants



Premises:
Up to 247,000 SF



Dimensions:
950'x260'



Building Type:
Rear Load



Construction Type:
Concrete Tilt Wall



Clear Height:
36'



Column Spacing:
52.75'x50' w/
60' speedbay



Dock High Doors:
56



Drive-In Doors:
2



Sprinkler:
ESFR



Auto Parking:
174 Spaces



Trailer Parking:
Up to 52 Spaces



Truck Court:
200' (Shared)

Building #2 - 675 Pitts School Rd NW

Single or Multi-Tenant Design Flexibility

- + I-2 Zoning
- + Excellent labor pool
- + Close proximity to Concord Padgett Regional Airport
- + Ample employee amenities in immediate area
- + I-85 Signage Opportunity for Tenants



Premises:
Up to 148,720 SF



Dimensions:
572'x260'



Building Type:
Rear Load



Construction Type:
Concrete Tilt Wall



Clear Height:
32'



Column Spacing:
52'x50' w/
60' speedbay



Dock High Doors:
33



Drive-In Doors:
2



Sprinkler:
ESFR



Auto Parking:
119 Spaces
Expandable to 224 Spaces



Trailer Parking:
Up to 52 Spaces



Truck Court:
200' (Shared)

AXIAL BONDS FARM

BY CRESCENT
COMMUNITIES

CBRE

Site Plan



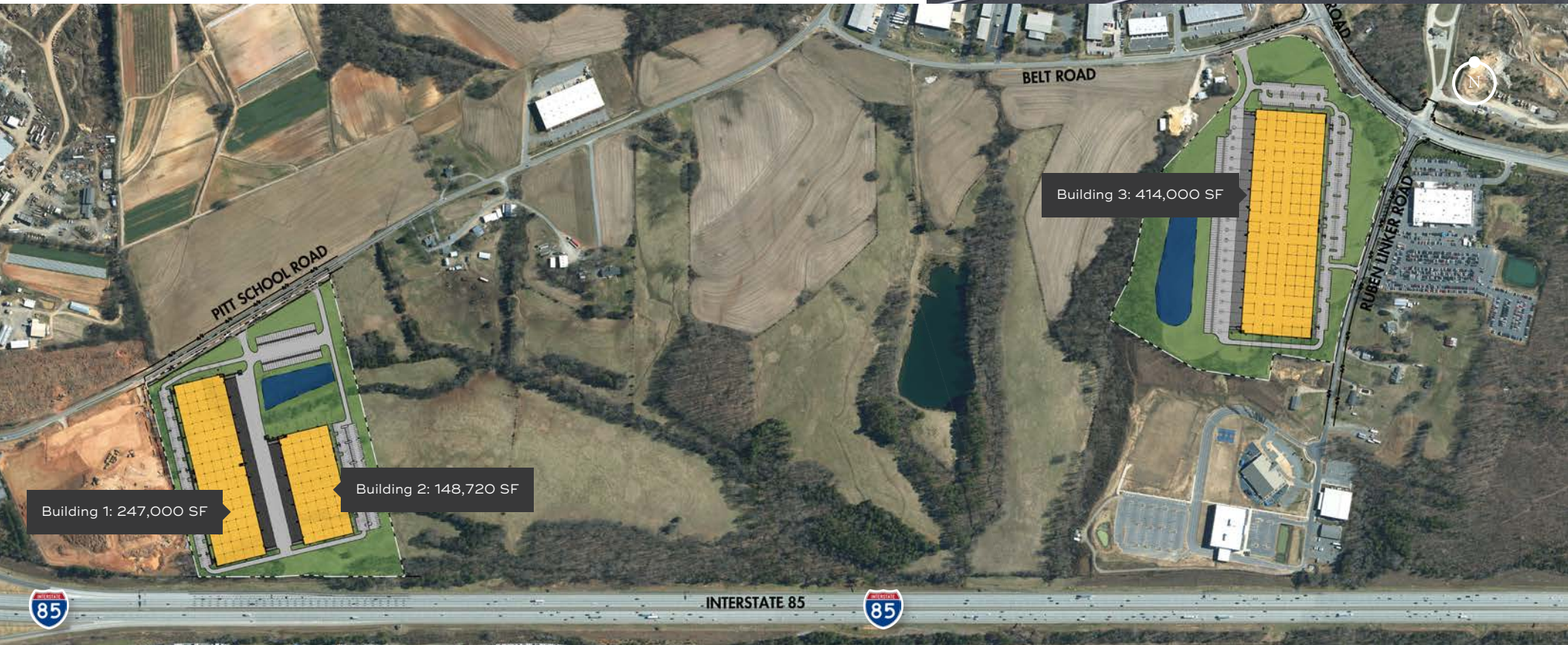
Strategic Location

AXIAL Bonds Farm—convenient, immediate access to I-85 and just 4.1 miles from I-485—offers unparalleled connectivity to the region's vast interstate system.



Axial Bonds Farm

AXIAL Bonds Farm will consist of three rear-loading industrial buildings totaling 809,720 square feet with ample employee and trailer parking. The three buildings will measure 414,000, 247,000, and 148,720 square feet and provide the flexibility to be demised and to accommodate multiple tenants. These features, along with modern clear heights and deep truck courts, will satisfy both local and regional manufacturing and assembly users.





CBRE

FOR MORE INFO CONTACT:

Bryan Crutcher
t 704.331.1215
bryan.crutcher@cbre.com

Anne Johnson
t 704.331.1225
anne.johnson@cbre.com

© 2023 CBRE, Inc. All rights reserved. This information has been obtained from sources believed reliable, but has not been verified for accuracy or completeness. You should conduct a careful, independent investigation of the property and verify all information. Any reliance on this information is solely at your own risk. CBRE and the CBRE logo are service marks of CBRE, Inc. All other marks displayed on this document are the property of their respective owners, and the use of such logos does not imply any affiliation with or endorsement of CBRE. Photos herein are the property of their respective owners. Use of these images without the express written consent of the owner is prohibited.